

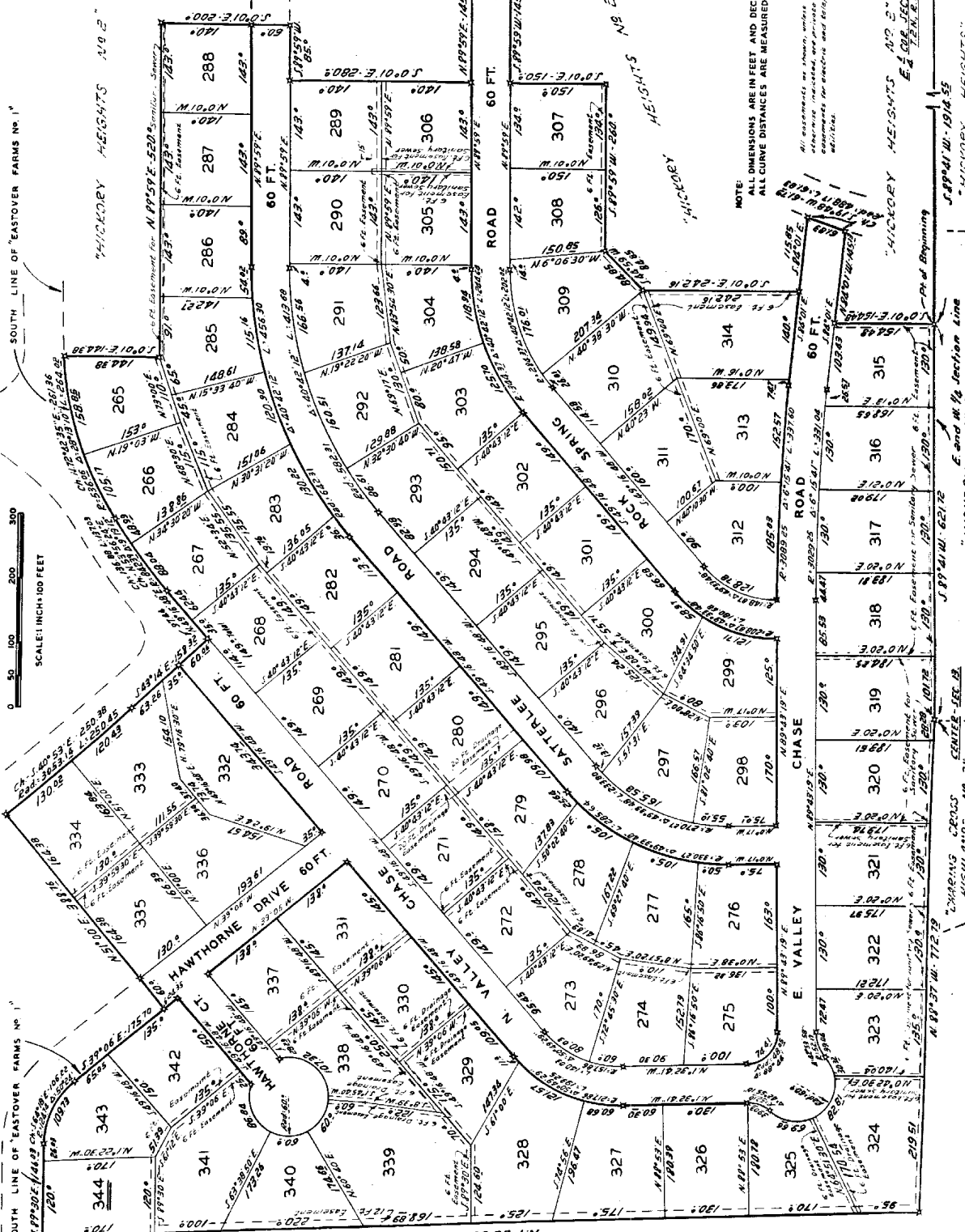
HEALINE ENGINEERS, INC.
BIRMINGHAM, MICHIGAN

"HICKORY HEIGHTS No. 3"

A SUBDIVISION OF PART OF THE N. 1/2 OF SECTION 13, T.2N., R.10E.,
BLOOMFIELD TWP., OAKLAND CO., MICH.

"EASTOVER FARMS No. 1"

"EASTOVER FARMS No. 2"



NOTE: ALL DIMENSIONS ARE IN FEET AND DECIMALS THEREOF. ALL CURVE DISTANCES ARE MEASURED ALONG THE ARC.

All easements are shown, unless otherwise indicated, and are shown in accordance with the applicable subdivision plat.

"HICKORY HEIGHTS No. 1"
"HICKORY HEIGHTS No. 2"
"HICKORY HEIGHTS No. 3"

"EASTOVER FARMS No. 1"
"EASTOVER FARMS No. 2"

"HICKORY HEIGHTS No. 1"
"HICKORY HEIGHTS No. 2"

"HICKORY HEIGHTS No. 1"
"HICKORY HEIGHTS No. 2"

"HICKORY HEIGHTS No. 1"
"HICKORY HEIGHTS No. 2"

"HICKORY HEIGHTS No. 3"

A SUBDIVISION OF PART OF THE N. 1/2 OF SECTION 13, T.2N., R.10E.,
BLOOMFIELD TWP., OAKLAND CO., MICH.

Plat approved pursuant to provisions of
Act 172 of P. A. of 1929, as amended, this
27 day of May, 1960
OAKLAND COUNTY PLAT BOARD

Wm. Merrill Chairman
Harold T. Murphy, Jr. Clerk
Daniel W. Barry, County Drain Commissioner
R. V. Murphy, Chairman, Board of Auditors
J. A. Smith, Chairman, Board of Auditors
R. E. Barry, Secretary Board of Auditors

DEDICATION

KNOW ALL MEN BY THESE PRESENTS, That we, the Robertson-Jamieson Land Co., a registered Michigan Co-Partnership (Oakland Co.) by Paul C. Robertson, Covert Robertson Jr., Clarence R. Olsen and Richard K. Jamieson acting for himself and as administrator de bonis non, with will annexed, for the estate of Hevin J. Jamieson, deceased, partners; as proprietors, have caused the land embraced in the annexed plat to be surveyed, laid out and platted to be known as "Hickory Heights No. 3" a subdivision of part of the N. 1/2 of Section 13, T.2N., R.10E., Bloomfield Twp, Oakland Co., Michigan, and that the roads as shown on said plat are hereby dedicated to the use of the public.

Signed and Sealed in the presence of:

ROBERTSON-JAMIESON LAND CO. by:

Wm. M. Bradford Witness
H. R. Reising Jr. Witness

Paul C. Robertson Paul C. Robertson
Covert Robertson Jr. Covert Robertson, Jr.
Clarence R. Olsen Clarence R. Olsen
Richard K. Jamieson Richard K. Jamieson
Richard K. Jamieson Administrator de bonis non, with will annexed, for the estate of Hevin J. Jamieson, deceased.

OAKLAND COUNTY
S. S. 17314
April 29, 60
Charles C. Sparks
Register

ACKNOWLEDGMENT
STATE OF MICHIGAN S. S.
COUNTY OF OAKLAND

On this 27th day of April, 1960 AD, before me a Notary Public in and for said County, personally came the above named Paul C. Robertson, Covert Robertson, Jr., Clarence R. Olsen and Richard K. Jamieson, acting for himself and as administrator de bonis non, with will annexed, for the estate of Hevin J. Jamieson, deceased, to me personally known, who being each by me duly sworn, did say that they are co-partners of ROBERTSON-JAMIESON LAND CO., a registered Michigan Co-Partnership (Oakland Co.) and that said instrument was signed and sealed in behalf of said Co-Partnership and acknowledged the same to be their free act and deed.

Wm. M. Bradford
Notary Public in and for said Co.,
By Commission expires: July 17, 1960

DESCRIPTION

The land embraced in the annexed plat of "HICKORY HEIGHTS NO. 3" a subdivision of part of the N. 1/2 of Section 13, T.2N., R.10E., Bloomfield Twp., Oakland Co., Mich. is described as beginning at a point in the E. and W. 1/4 section line of said section 13, distant S. 89°41' W. along said 1/4 section line 1914.55 ft. from the E. 1/4 corner of said section 13, said point being at the S. W. corner of "Hickory Heights No. 2" Sub'n., thence S. 89°41' W. along said 1/4 section line or northerly line of Hickory Heights No. 1" Sub'n., a distance of 621.72 ft. to center of said section 13; thence N. 88°37' W. along said E. and W. 1/4 section line or partially along the northerly line of "Charing Cross Highlands No. 2" Sub'n., a distance of 772.79 ft., thence N. 1°22'30" W. 1553.89 ft. to south line of "Eastover Farms No. 1" Sub'n., thence on the following nine courses and distances along said south line; S. 89°30' E. 146.03 ft., thence on a curve to the right (radius = 124.74 ft., long chord bears S. 64°18' E. 106.22 ft.) a distance of 109.73 ft., thence S. 89°06' E. 175.70 ft., thence N. S1°00' E. 388.78 ft., thence on a curve to the left (radius = 3053.14 ft., long chord bears S. 40°53' E. 250.38 ft.) a distance of 250.45 ft., thence S. 43°14' E. 158.32 ft., thence N. 49°16' 45" E. 97.44 ft., thence on a curve to the right (radius = 842.39 ft. long chord bears N. 53°56' 24" E. 136.58 ft.) a distance of 137.03 ft. to point of compound curve, thence on a curve to the right (radius = 536.06 ft. long chord bears N. 72°42' 35" E. 261.36 ft.) a distance of 264.02 ft., thence on the following sixteen courses along the boundary of "Hickory Heights No. 2" Sub'n., S. 0°01' E. 144.38 ft., thence N. 89°59' E. 520.0 ft., thence S. 0°01' E. 200.0 ft., thence S. 89°59' W. 85.0 ft., thence S. 0°01' E. 280.0 ft., thence N. 89°59' E. 145.0 ft., thence S. 0°01' E., 60.0 ft., thence S. 89°59' W. 145.0 ft., thence S. 0°01' E. 150.0 ft., thence S. 89°59' W. 200.0 ft., thence S. 44°59' W. 84.85 ft., thence S. 0°01' E. 242.16 ft., thence S. 84°01' E. 115.85 ft., thence on a curve to the left (radius = 488.17 ft., long chord bears S. 19°48' W. 61.79 ft.) a distance of 61.63 ft., thence N. 84°01' W. 145.13 ft., thence S. 0°01' E. 154.48 ft. to the point of beginning.

Note: This plat contains 80 lots numbered 265 to 344, both inclusive.

SURVEYOR'S CERTIFICATE

I hereby certify that the plat hereon delineated is a correct one and that permanent metal monuments consisting of bars not less than one-half (1/2) inch in diameter and thirty-six (36) inches in length, encased in a concrete cylinder at least four (4) inches in diameter and thirty-six (36) inches in depth, have been placed at points marked thus (M) as thereon shown at all angles in the boundaries of the land platted, at all intersections of roads and at intersections of the roads with boundaries of the plat as shown on said plat.

Wilbur S. McAlpine
Wilbur S. McAlpine
Registered Land Surveyor No. 1015

CERTIFICATE OF MUNICIPAL APPROVAL

This Plat was approved by the Township Board of the Township of Bloomfield at a meeting held February 22, 1960 A.D.

Ann M. Birrell
Ann M. Birrell
Dep. Twp. Clerk

June 2, 1960
June 6, 1960
June 3, 1960
R. L. Mearns
Bloomfield
Hickory Heights No. 3
June 1, 1960
June 1, 1960
June 1, 1960

APPROVED THIS 27th DAY
OF May, AD 1960
Paul C. Robertson, Covert Robertson, Jr., Clarence R. Olsen and Richard K. Jamieson of the County of Oakland, State of Michigan

Wm. M. Bradford
Notary Public
By Commission Expires July 17, 1960