

This information is intended for HPOA members only and is not to be distributed or used for any other purpose

JAN 20 1956

37360

"HICKORY HEIGHTS No. 1"

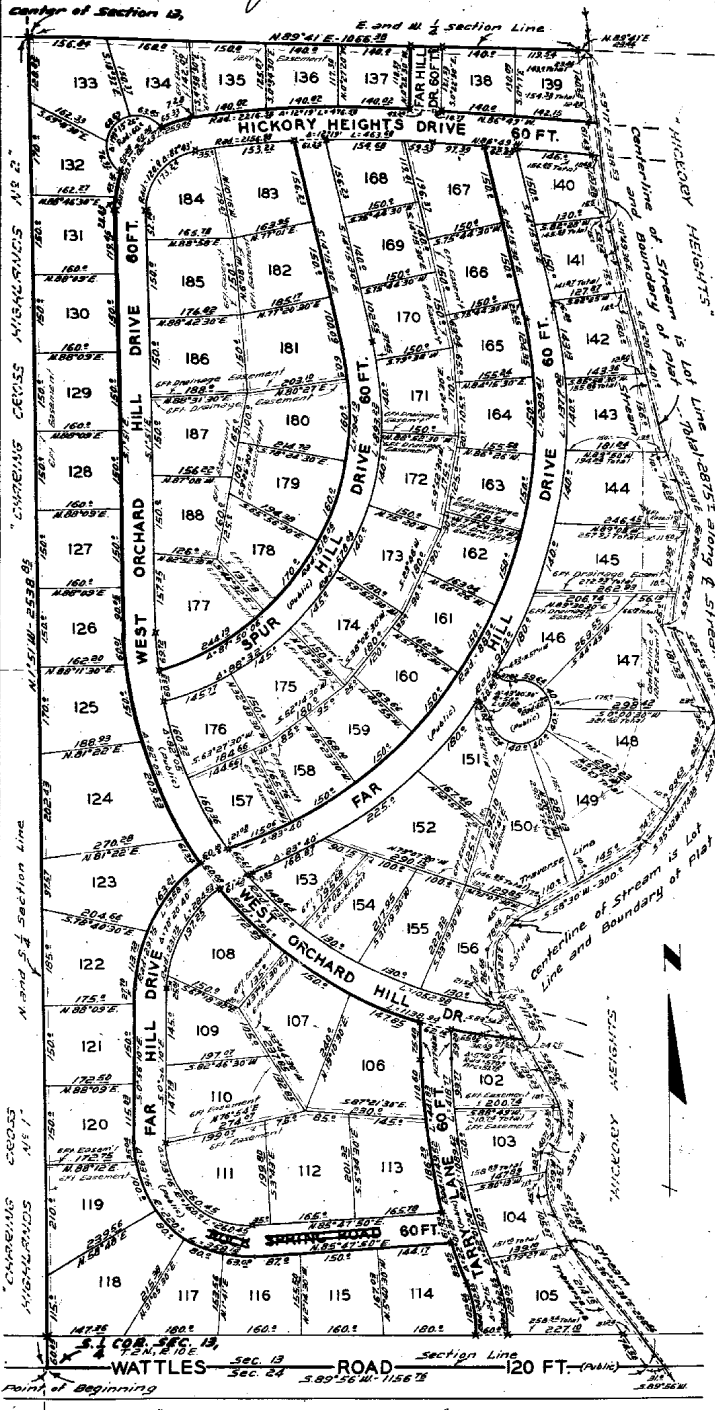
A SUBDIVISION OF PART OF THE S.E. 1/4 OF SECTION 13, T.2N., R.10E.
BLOOMFIELD TWP., OAKLAND CO., MICH.

SCALE: 1 INCH = 150 FEET

ALL DIMENSIONS ARE IN FEET AND DECIMALS THEREOF
A.L. CURVE DISTANCES ARE MEASURED ALONG THE ARC

COPY
Register's Office
Oakland County, Mich.
Plat of Hickory Heights No. 1
Bloomfield Township
was recorded this 23rd day of
January A.D. 1956 at 10:45 o'clock
P.M. in Lib. 83 of Plat
Page 19
Heleen Starkins, Deputy
REGISTRAR OF DEEDS

Surveyor's Office
I hereby certify this copy is a true copy of map or plat as shown to me by the surveyor.
Date: January 20, 1956
File: 1956-10
Drawn: January 25, 1956
Checked: January 20, 1956
Walter J. Argus
Surveyor General
By: W. L. MacCallister
Plat Engineer



DEDICATION

KNOW ALL MEN BY THESE PRESENTS, That we, Hickory Hill Land Co., a registered limited partnership, by Covert Robertson Jr., Nevin J. Jamieson, Paul C. Robertson, Richard K. Jamieson and Clarence R. Olsen, partners; the annexed plat to be surveyed, laid out and platted as part of the S.E. 1/4 of Section 13, T.2N., R.10E. Bloomfield Twp., Oakland Co., Mich., and that the roads as shown on said plat are hereby dedicated to the use of the public.

Signed and Sealed in the presence of:
HICKORY HILL LAND CO., by
Walter J. Argus
WITNESSES
Walter J. Argus
Heleen Starkins
HELEN MARIE McCOMB Witness

ACKNOWLEDGMENT

STATE OF MICHIGAN } S.S.
COUNTY OF OAKLAND }

On this 10th day of JANUARY 1956 A.D., before me a Notary Public in and for said County, personally came the above named Covert Robertson Jr., Nevin J. Jamieson, Paul C. Robertson, Richard K. Jamieson and Clarence R. Olsen, known to me to be the persons who executed the above dedication and acknowledged the same to be their free act and deed.

Walter J. Argus Notary Public in and for said Co.
My Commission expires -
January 23, 1957

CERTIFICATE OF MUNICIPAL APPROVAL

This plat was approved by the Township Board of the Township of Bloomfield at a meeting held July 5, 1956 A.D..

Anna M. Russell
Dep. Twp. Clerk

SURVEYOR'S CERTIFICATE

I hereby certify that the plat hereon delineated is a correct one and that permanent metal monuments consisting of bars, not less than one-half inch in diameter and thirty-six (36) inches in length, encased in a concrete cylinder at least four (4) inches in diameter and thirty-six (36) inches in depth have been placed in the boundaries of the land platted, at all intersections of roads and at intersections of the roads with boundaries of the plat as shown on said plat.

Wilbur A. McAlpine
Registered Land Surveyor

DESCRIPTION

The land embraced in the annexed plat of "HICKORY HEIGHTS No. 1" a subdivision of part of the S.E. 1/4 of Section 13, T.2N., R.10E. Bloomfield Twp., Oakland Co., Mich., is described as follows: Beginning at the corner of said Section 13; thence N. 51° 51' W. along N. and S. 1/2 section line and easterly line of Charing Cross Highways NE 1/4 and Charing Cross Highways NE 1/4 Sub 1 to the center of said Section 13; thence N. 89° 41' E. along E. and W. 1/2 section line 1066.39 ft. to a point in traverse along stream (said point being later referred to as the N.W. corner of "Hickory Heights" Sub 1); thence Southwesterly and downstream along said centerline and westerly line of said "Hickory Heights" Sub 1, 2875 ft. more or less to the south line of said Section 13 and the S.W. corner of said "Hickory Heights" Sub 1; thence S. 89° 56' W. along section line 3 1/2 ft. to a point in said traverse which is located 5.917 E. 358.53 ft.; and S. 11° 49' 30" E. 59.75 ft.; and S. 15° 20' 00" E. 100.31 ft.; and S. 25° 37' 30" E. 114.83 ft.; and S. 9° 24' 30" W. 224.55 ft.; and S. 25° 55' 30" E. 216.53 ft.; and S. 20° 45' W. 82.37 ft.; and S. 35° 42' W. 174.30 ft.; and S. 28° 30' W. 300.5 ft.; and S. 31° 11' W. 78.85 ft.; and S. 12° 30' E. 86.84 ft.; and S. 15° 20' E. 117.84 ft.; and S. 3° 55' E. 130.53 ft.; and S. 2° 15' W. 53.55 ft.; and S. 3° 11' W. 40.11 ft.; and S. 2° 09' W. 82.57 ft.; and S. 2° 18' E. 105.41 ft.; and S. 36° 25' 30" E. 288.55 ft. from first to second traverse point in said traverse; thence continuing S. 89° 56' W. along section line 1156.74 ft. to the point beginning.

Plat contains 87 lots, numbered 102-188, both inclusive.

APPROVED THIS 16th DAY OF January A.D. 1956
By: Walter J. Argus
Surveyor General

OAKLAND COUNTY TREASURER'S CERTIFICATE
No. 12355
Poncha, Mich. Jan 17 1956
I HEREBY CERTIFY that there are no TAX LISTS or TITLES held by any individual against the within description, as a result of any taxes or assessments levied on the 1st day of the month, as appears by the records in this office except as stated.
Charles G. Sprules
Treasurer

Approved by Oakland County Plat Book, pursuant to Act 179 of P.A. of 1929, as amended, this 16th day of January A.D. 1956.
By: Walter J. Argus
Surveyor General
COUNTY BOARD OF AUDITORS
By: Walter J. Argus
Plat Engineer

Note: All easements, unless otherwise stated, are private easements for electric and telephone utilities.

Copy